



Automated Customs Clearance by



www.cargo-overseas.co.uk

What is happening?

- On the 31st December 2020 the UK's transition period ends and the UK will leave the EU
- Whilst physical inspection regimes and trade talks remain uncertain, any UK company that imports from, or exports to, the EU will be REQUIRED to complete a UK customs declaration for every shipment

It is estimated that this will result in an extra **820,000** customs declarations every DAY

- There is limited supply of trained customs agents to meet this substantial additional demand, which could lead to delays at UK ports
- If you export goods to, or import goods from, the EU you will need to make provision to ensure your shipments are processed through UK Customs



What can ACE by cargo overseas do to help?



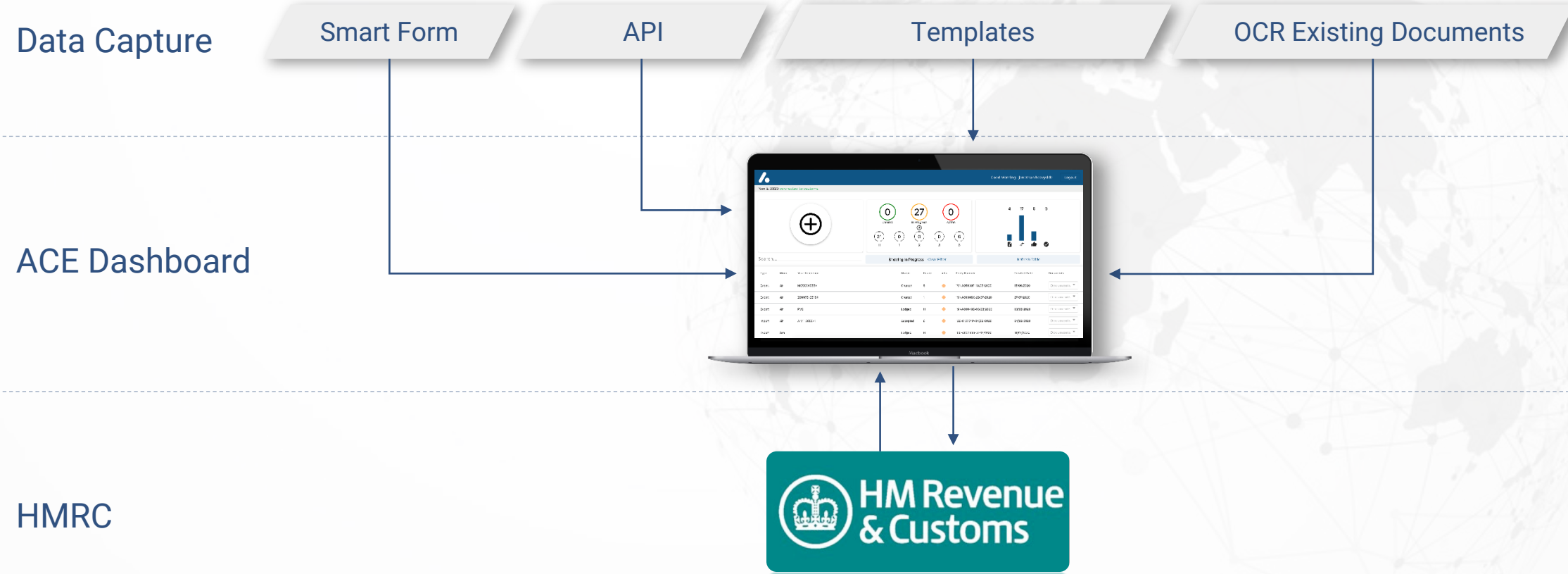
Cargo Overseas has developed an IT solution for UK importers and exporters to efficiently process their customs declarations with HMRC; this solution is our Automated Customs Entry (ACE) dashboard

Ace's interactive dashboard features include:

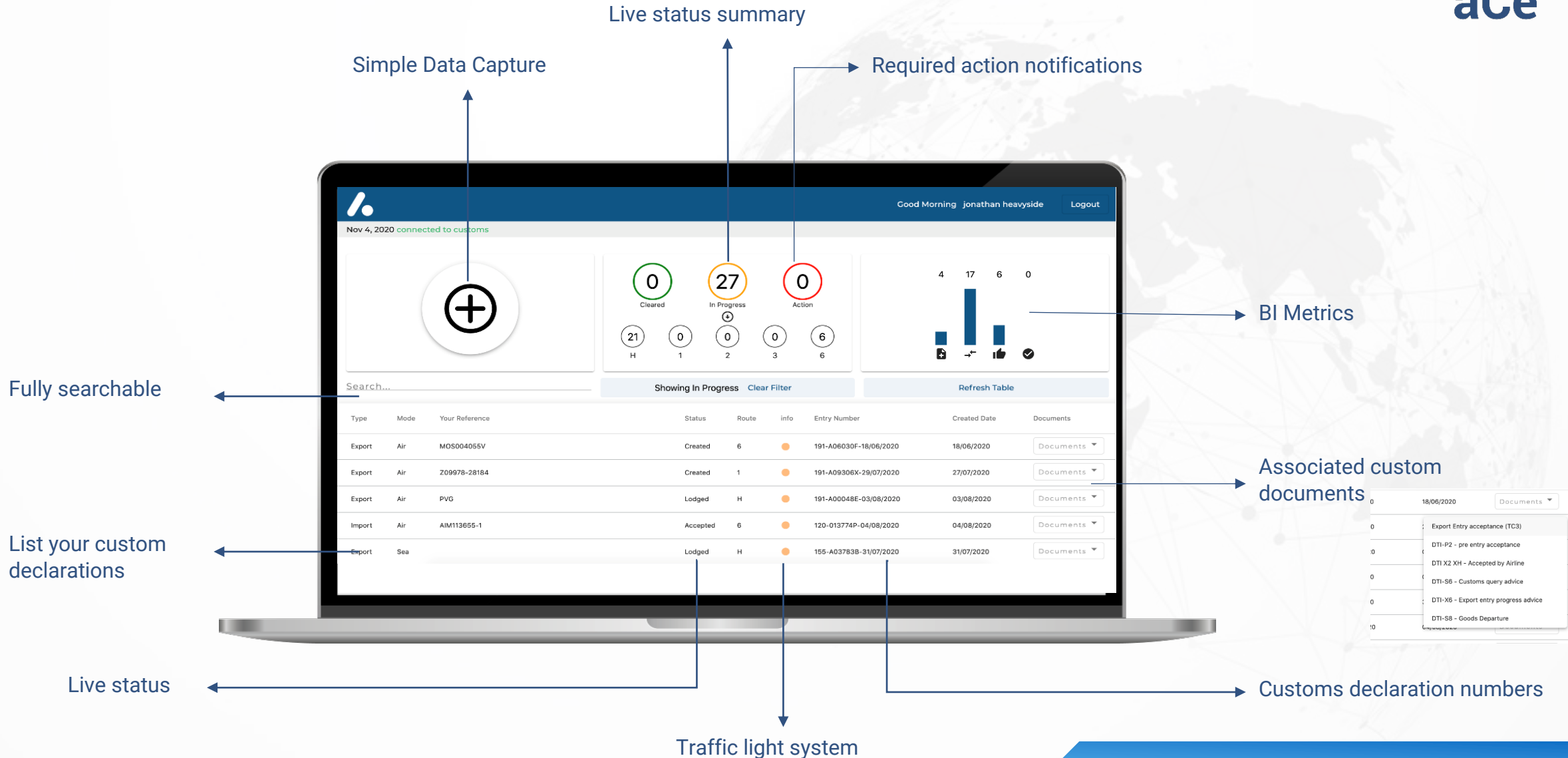
- Instant submission of your customs declarations through our online portal
- Simple and timely data capture
- Live status of customs declarations updated from HMRC
- Notifications of actions required for clearances
- Storage of customs documentation for ease of compliance
- Searchable custom's commodity codes database



How does ACE work ?



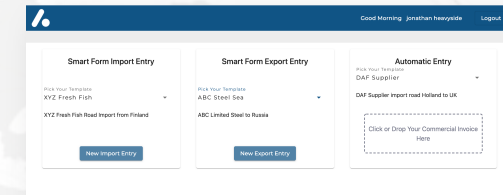
The Dashboard



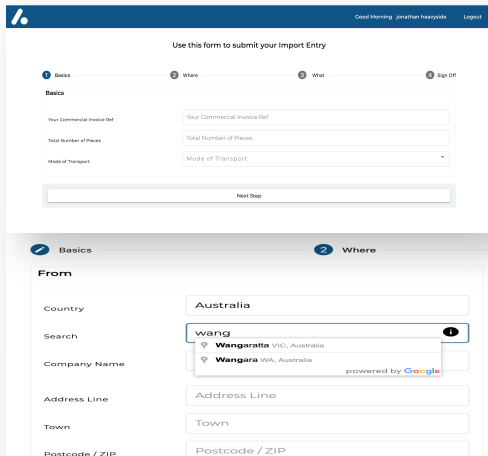
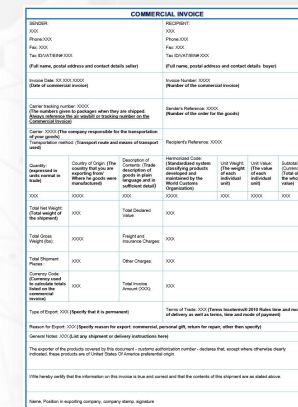
The data capture methods



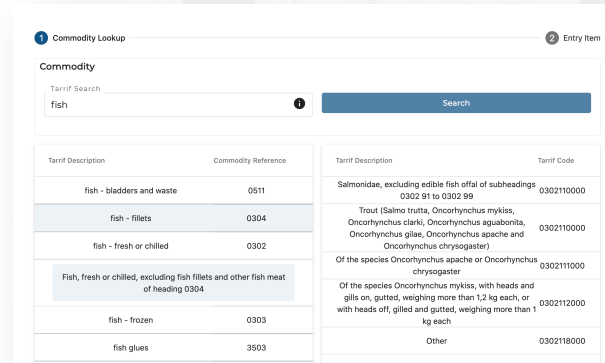
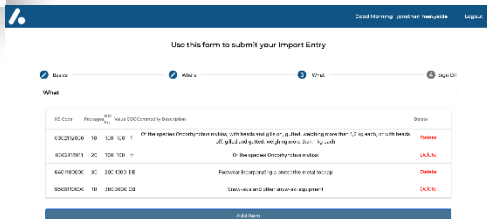
- Four time saving options:
- Smart form data entry
- Templates retain data for regular suppliers/customers
- OCR data capture from your documentation
- API directly from your ERP into the aCe dashboard
- Instant / Simple



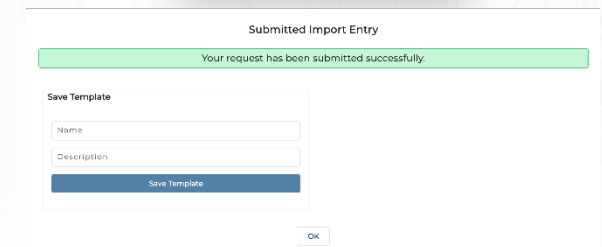
OCR reads your commercial invoice



Intuitive and simple smart form, including worldwide address look up



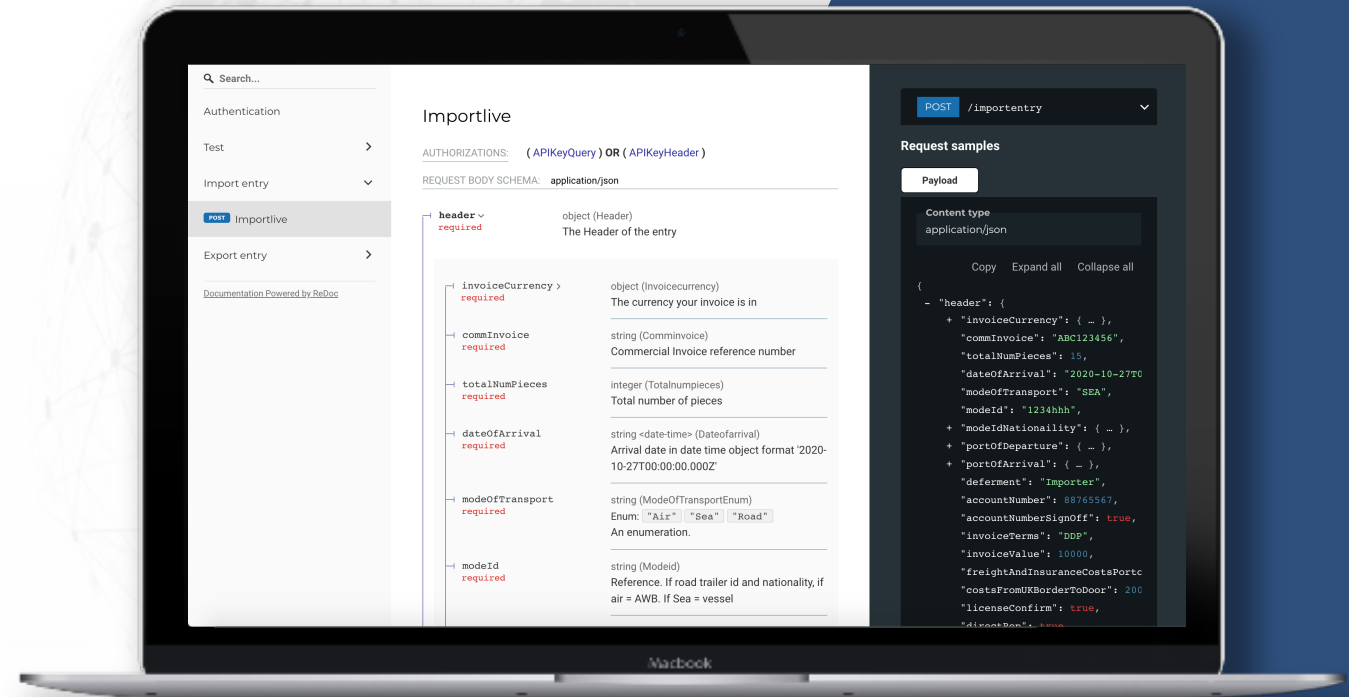
Customs commodity code lookup functionality



API direct from your ERP



- Public API for receiving customs entries directly into the ace portal
- Full documentation and example calls located at [ace.forwarding.digital/developer docs](https://ace.forwarding.digital/developer/docs).
- Test API keys are available on request



WHY US?



Cargo Overseas has over 30 years' experience performing the same customs declaration processes for hundreds of our clients who currently import and export to non-EU countries around the world

Where we differentiate is that we combine our extensive freight industry knowledge with the latest digital technologies to deliver an uncomplicated Brexit solution

We provide simple data capture, automated processing and real-time information to ensure minimal impact to your business;

We are responsive to the ever moving landscape of leaving the EU and continually innovate to find better ways to address the challenges our clients face.



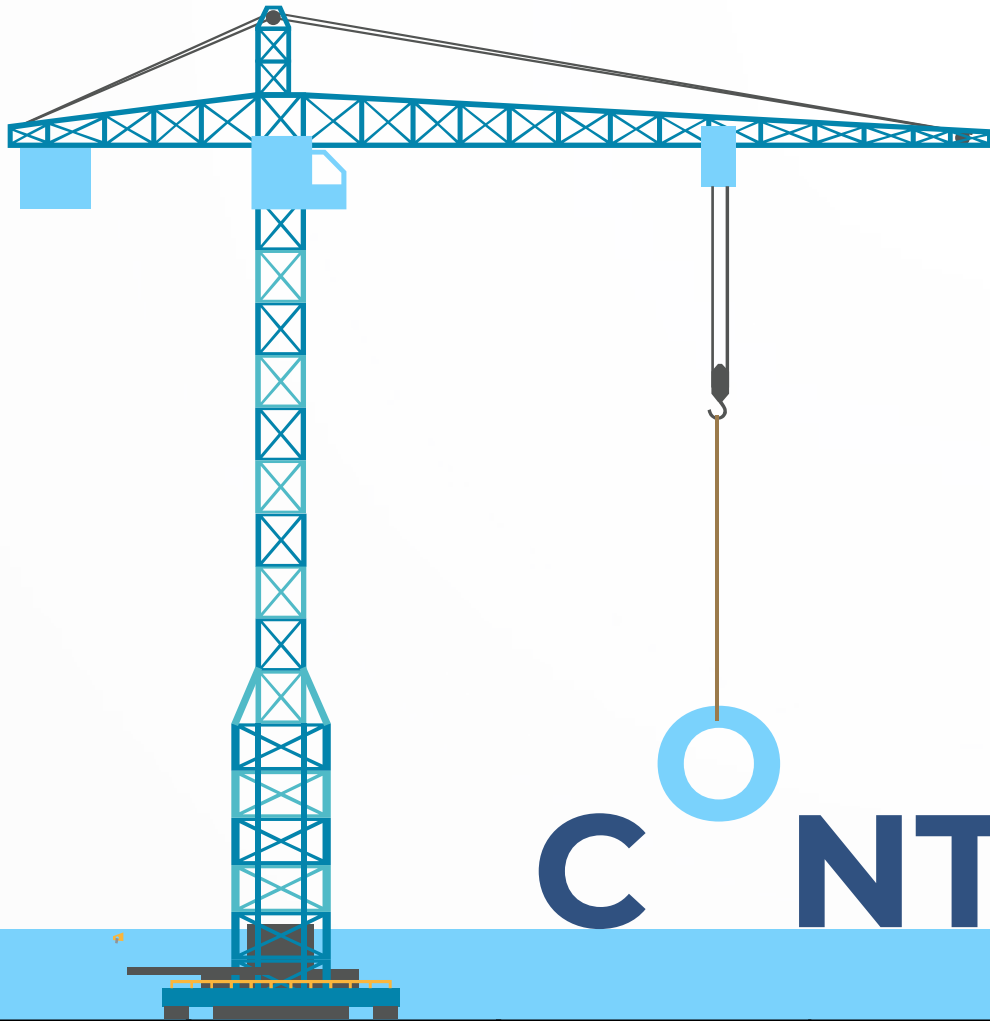
HOW MUCH?



Our pricing structure is designed to be as simple and transparent as possible. All users will have access to the dashboard platform and its standard features.

Basic access	API / Template access	OCR access
No fee	Annual contract and license fee (dependent on minimum commitment to volume of entries)	Initial set up fees (dependent on complexity/volume of document templates)
Smart form data entry	Smart form, API and Template data entry options	Smart form and OCR data entry
£45 per customs declaration entry	£40 per customs declaration entry	£40 per customs declaration entry





Contact us and we can provide zoom/teams meetings to demonstrate the product and pricing specific to your requirements and volumes. Remember the ACE system can be used for non-EU customs declarations as well, so please ask us regarding your worldwide requirements.

✉ aceinfo@forwarding.digital

🌐 www.cargo-overseas.co.uk

C  N T A C T U S